

deco™

AX1800 Whole Home Mesh
Wi-Fi 6 System



AX1800 Whole Home Mesh Wi-Fi 6 System

Superior Mesh Wi-Fi, Everywhere



Deco X20




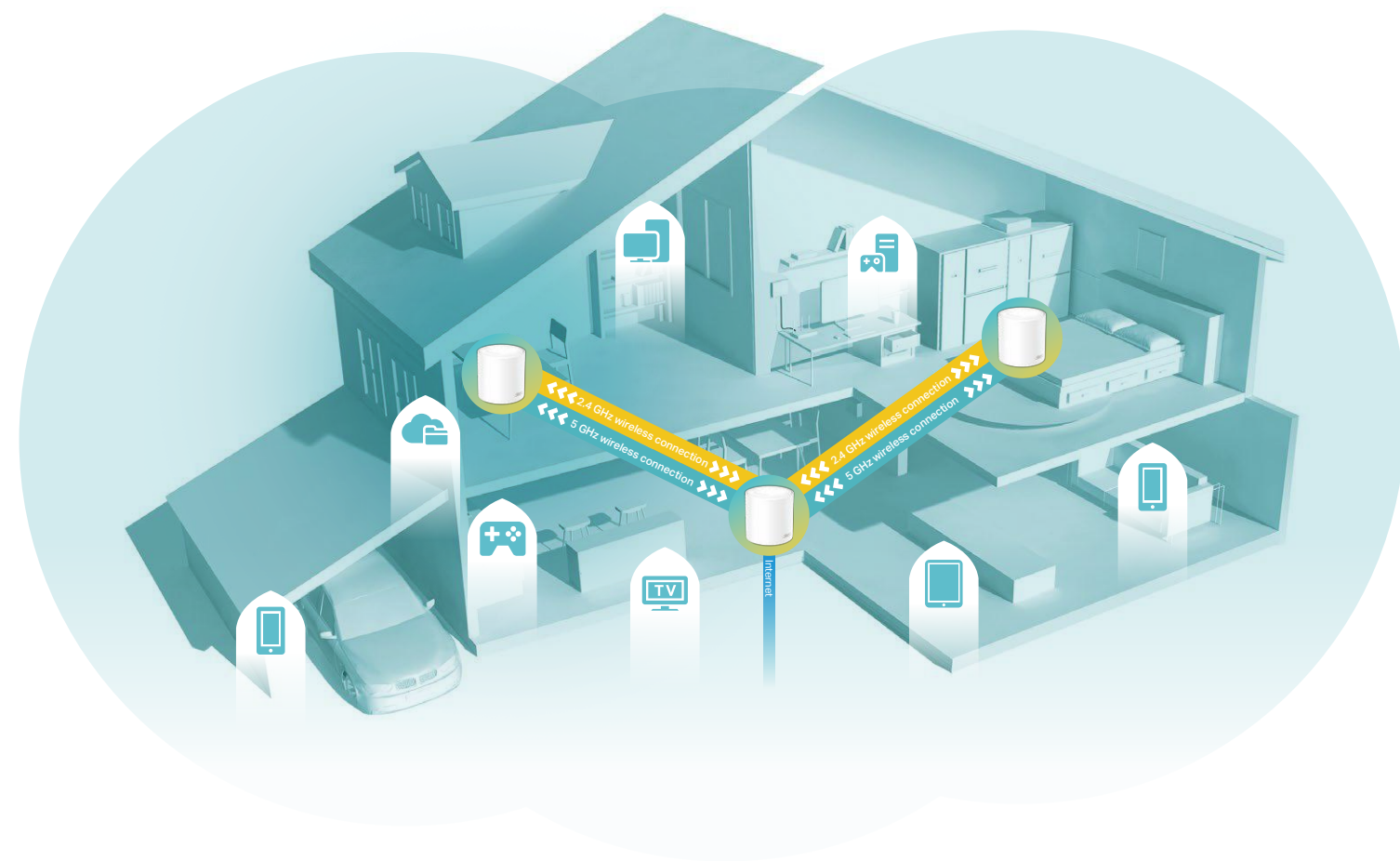
Highlights


Superior Mesh Wi-Fi, Everywhere


 Improved Capacity for More Connections


 Unrivaled Wi-Fi 6 Speed up to 1800 Mbps[†]


 Immersive Streaming, No More Buffering





 **Wi-Fi Dead-Zone Killer**
Eliminate weak signal areas with a clearer, stronger whole home Wi-Fi signal generated from Wi-Fi 6. No more searching around for a stable connection.[△]

 **Seamless Roaming with One Wi-Fi Name**
Deco units work together to form a unified network with a single network name. Walk through your home and stay connected with the fastest possible speeds.[‡]

 **TP-Link HomeCare™**
HomeCare ensures every device on your network remains protected with a live threat database.

 **Parental Controls**
Limit online time and block inappropriate content according to unique profiles created for each family member.

 **Antivirus**
Safeguard your home network with Deco's built-in firewall and advanced wireless encryption, protecting devices from the latest threats.

 **Quality of Service (QoS)**
Prioritize the devices and applications that matter to you, ensuring faster speeds at those all-important moments.

Features



Robust Parental Controls

Manage content and control when each device can access the internet

- **Profiles** – Create a profile for each family member, and manage them individually
- **Content Filter** – Four levels are available for filtering content, each catering to a specific age group
- **Time Controls** – Set daily time limits for the total time spent online and block a person's internet access between certain times
- **Pause the Internet** – Pause a family member's internet and resume it whenever you like



Assisted Setup

Easily set up Decos and find the ideal spot to place each unit

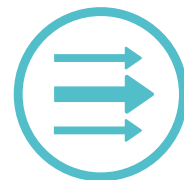
- **Auto Connection Test** – Test the internet connection of your Decos and helps to identify a suitable location for them
- **Remote Management** – Manage your Deco network from a smartphone or tablet via the app, no matter where you find yourself
- **Online Upgrade** – Keep informed of the latest firmware updates



Built-In Antivirus

Protect all connected devices in your home from viruses and malware

- **Malicious Content Filter** – Block malicious websites that are listed in real-time updated database to ensure you can surf the net in safety
- **Intrusion Prevention System** – Protect your network and applications against external attacks and eliminates vulnerabilities
- **Infected Device Quarantine** – Prevent infected devices from sending sensitive information or security threats to clients outside your network



Quality of Service

Prioritize devices and applications for faster performance when needed

- **For Applications** – Prioritize the online activity that's most important to everyone on the network
- **For Devices** – Give high priority to the devices that need the fastest internet connection



Security

Safeguard your home network with a firewall and wireless encryption

- **Encryption for Secure Network** – WPA/WPA2/WPA3 encryptions provide active protection against security threats
- **Firewall** – Protect your network devices from malicious attacks
- **Blacklist** – Add specific devices to blacklist to protect your network from unauthorized users



Work with All Deco Models

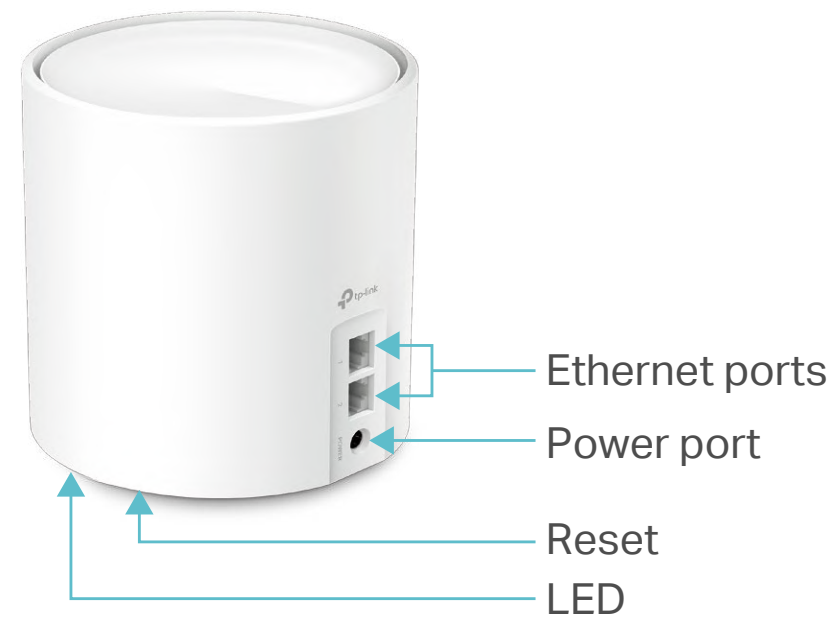
Form a Mesh network with your desired Deco models

All Deco models can work together. Just expand Mesh Wi-Fi coverage anytime by adding more Decos

Specifications

Hardware

- Ethernet Port: 2 Gigabit RJ45 ports per unit (WLAN/LAN auto-sensing)
- Button: 1 RESET button on the underside
- Antenna: 2 internal omni-directional antennas
- Power Consumption (with power adapter): 13.2 W max
- Dimensions (W × D × H): 4.33 × 4.33 × 4.49 in (110 × 110 × 114 mm)
- Power Adapter Input: 100-240 V~50-60 Hz 0.6 A
- Power Adapter Output: 12 V \equiv 1.2 A



Wireless

- Wireless Standards: IEEE 802.11a/n/ac/ax 5 GHz, IEEE 802.11b/g/n/ax 2.4 GHz
- Mesh protocol: 802.11 k/v/r
- Frequency: 2.4 GHz and 5GHz
- Signal Rate: 574 Mbps on 2.4 GHz, 1201 Mbps on 5 GHz, 1024QAM on 2.4 GHz and 5 GHz
- Transmit Power: FCC: <30 dBm(2.4 GHz), <30 dBm(5 GHz)
CE: <20 dBm (2.4 GHz), <23 dBm (5 GHz)
- Wireless Security: WPA/WPA2-PSK/WPA3 encryptions

Software

- Working Mode: Router, Access Point
- WAN Type: Dynamic IP/Static IP/PPPoE/L2TP/PPTP
- DHCP: Server
- Quality of Service: WMM
- Firewall Security: SPI Firewall
- Protocols: Supports IPv4 and IPv6
- Guest Network: 2.4 GHz Guest Network×1, 5 GHz Guest Network×1
- Features: Parental Controls, QoS (Quality of Service), Reporting, Assisted Setup, Address Reservation, Port Forwarding, TP-Link DDNS, IPTV, IPv6, LED Control
- Management: Local Management; Remote Management; Multi-Managers

Others

- Certification: CE, FCC, IC, RoHS, RCM, JPA, JRF, VCCI,
- Smartphone/Tablet Requirements: iOS 9.0 or later, Android 4.4 or later
- Environment:
Operating Temperature: 0°C~40°C (32 °F~104 °F)
Storage Temperature: -40°C~70°C (-40 °F~158 °F)
Operating Humidity: 10%~90%
Storage Humidity: 5%~90%
- Package Contents for Deco X20(1-pack):
1 Deco X20 unit
1 RJ45 Ethernet cable
1 Power adapter
1 Quick Installation Guide
- Package Contents for Deco X20(2-pack):
2 Deco X20 units
1 RJ45 Ethernet cable
2 Power adapters
1 Quick Installation Guide
- Package Contents for Deco X20(3-pack):
3 Deco X20 units
1 RJ45 Ethernet cable
3 Power adapters
1 Quick Installation Guide

Attention: this device may only be used indoors in all EU member states and EFTA countries.

This device complies with part 15 of the FCC Rules. Operation is subject to the following two conditions: (1) This device may not cause harmful interference, and (2) this device must accept any interference received, including interference that may cause undesired operation.

Specifications are subject to change without notice. All the brands and product names are trademarks or registered trademark of their respective holders.

*Maximum wireless signal rates are the physical rates derived from IEEE Standard 802.11 specifications. Actual wireless data throughput and wireless coverage, and quantity of connected devices are not guaranteed and will vary as a result of network conditions, client limitations, and environmental factors, including building materials, obstacles, volume and density of traffic, and client location.

†Clients need to support 802.11k/v/r and may require additional set up. Performance may vary depending on the client device.

‡Use of Wi-Fi 6 and other features including OFDMA, MU-MIMO, 1024-QAM, and BSS Color require clients to also support the corresponding features.

©2020 TP-Link

www.tp-link.com

TP-Link AX1800 Whole Home Mesh Wi-Fi 6 System Deco X20