




AX1800 Wireless Dual Band Gigabit Router

Enjoy 5G+ Speed Sharing Everywhere



Archer NX200

5G Superior 5G up to 4.67 Gbps**

 Dual Band Powerful Wi-Fi 6

 EasyMesh-Compatible Seamless Wi-Fi*

 SIM Card Plug & Play

Highlights

Superior 5G – A Revolutionary Experience

Take advantage of your advanced 5G network with download speeds up to 4.67 Gbps. Share your 5G network with multiple Wi-Fi devices and enjoy uninterrupted Ultra HD movies, blazingly fast file downloads, and smooth video chats and video conferences. At the same time, NX200 is backward compatible with 4G mode.**

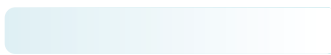
5G

Powerful Broadband Connection



4.67 Gbps**

4G-LTE Advanced



300 Mbps

4G-LTE



150 Mbps



Higher Speed



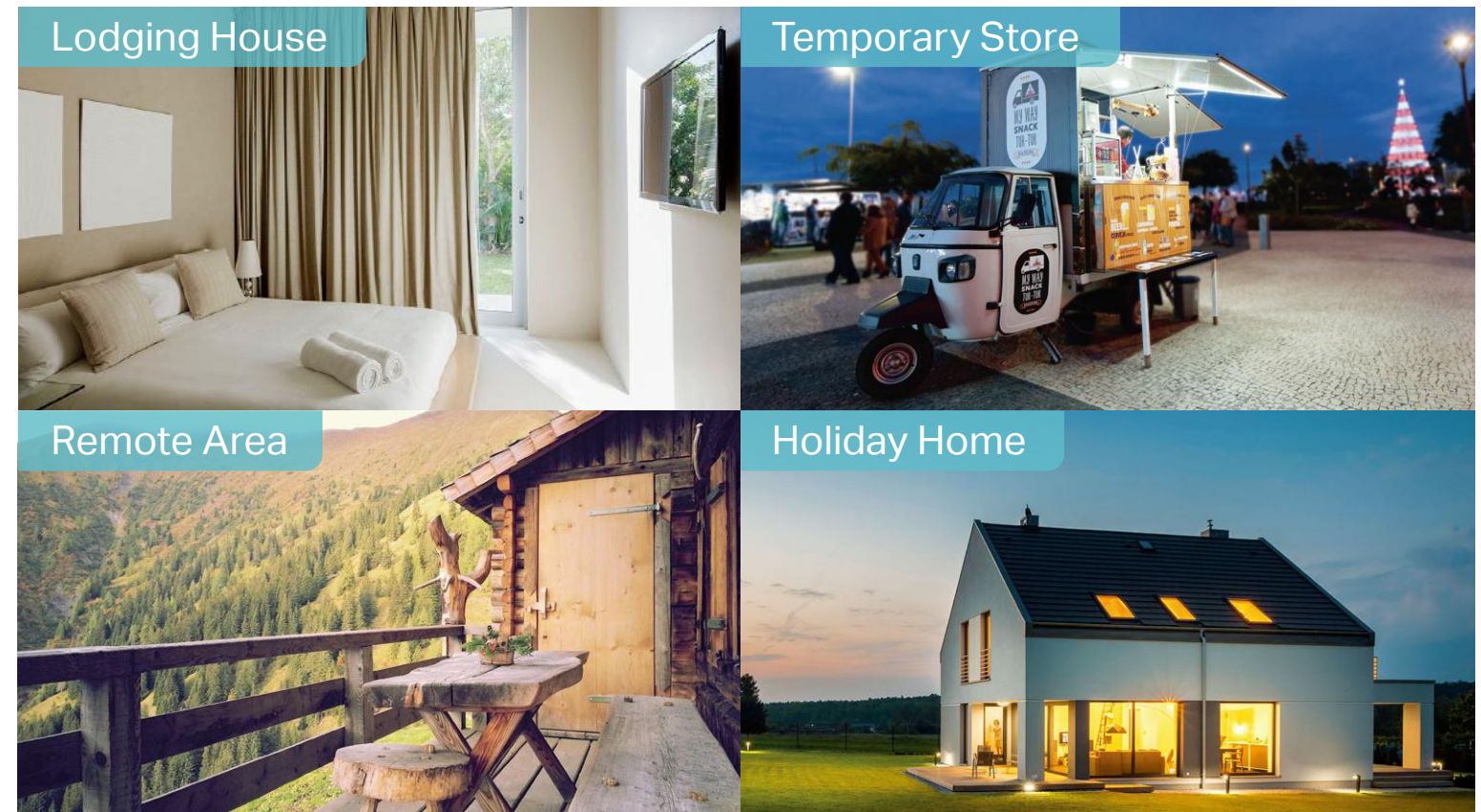
Lower Latency



Larger Capacity

Wi-Fi Where You Need It

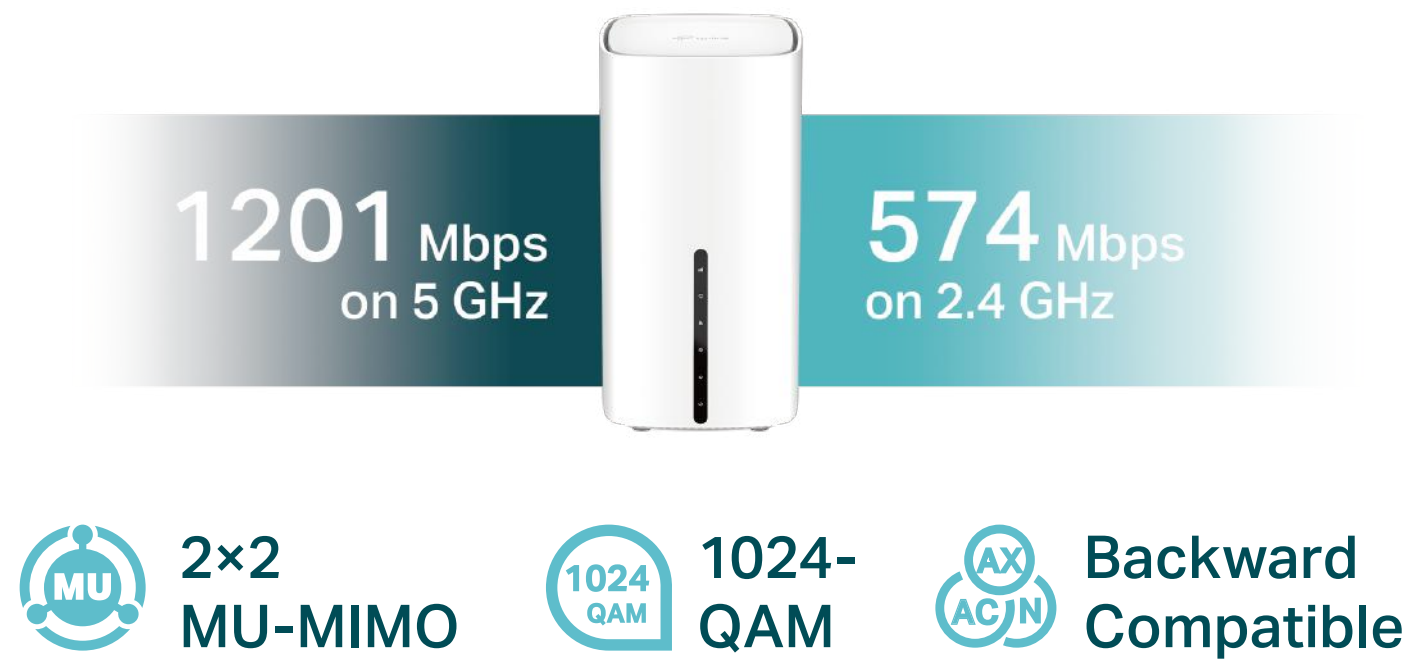
Enjoy unmatched convenience and versatility. Tested in the field for years to ensure universal compatibility with 8 5G/LTE antennas to deliver a smooth connection. Simply plug in a Nano SIM card and power on this elegant piece of technology to utilize fast and stable Wi-Fi, whether you're at home or working remote.



Highlights

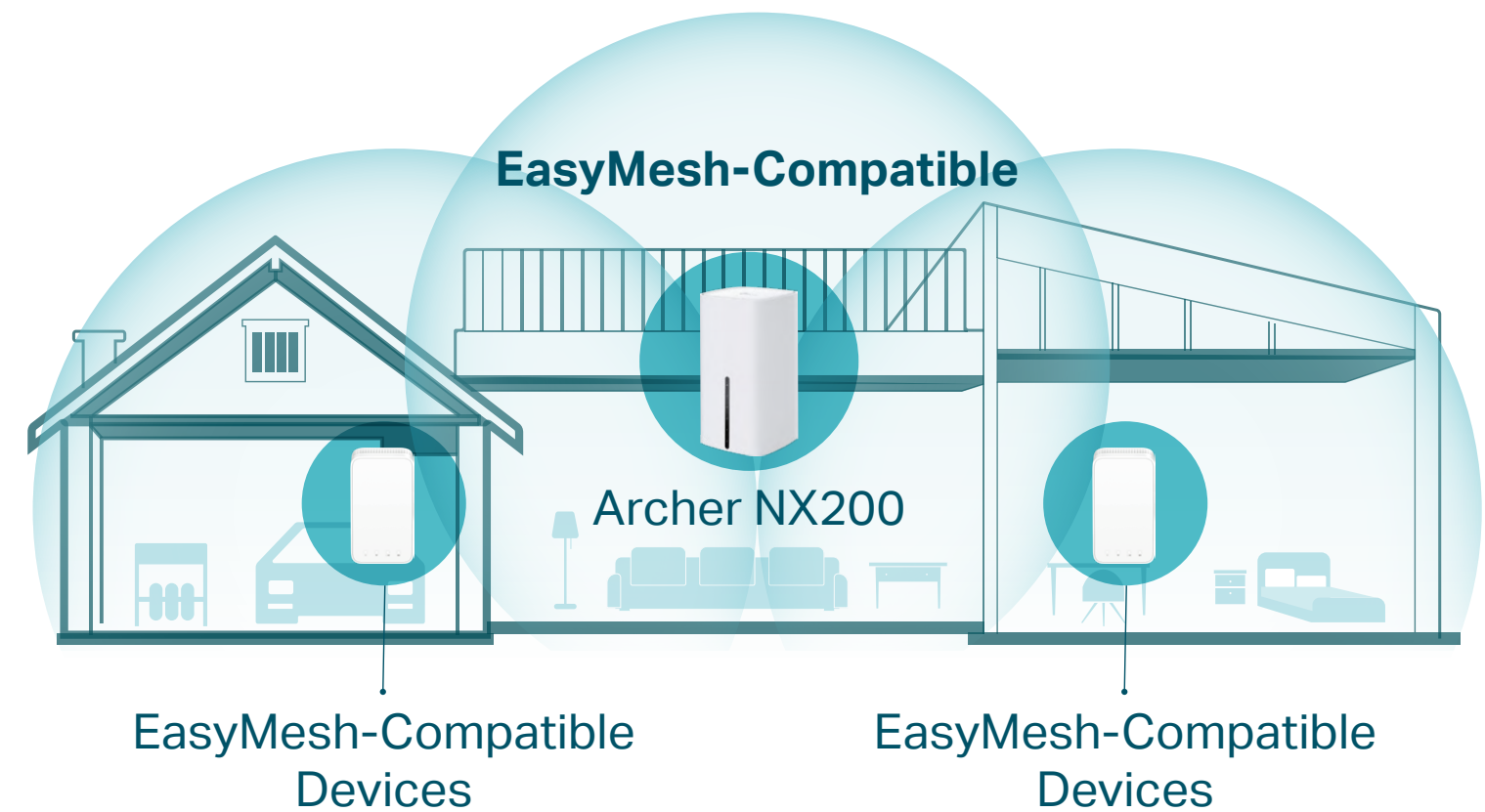
AX1800 – Powerful Wi-Fi 6

Archer AX1800 brings you incredibly fast dual-band speeds up to 3× faster than the previous AC generation of Wi-Fi, perfect for vivid 8K/4K streaming, intense online gaming, and more.



EasyMesh-Compatible Networking*

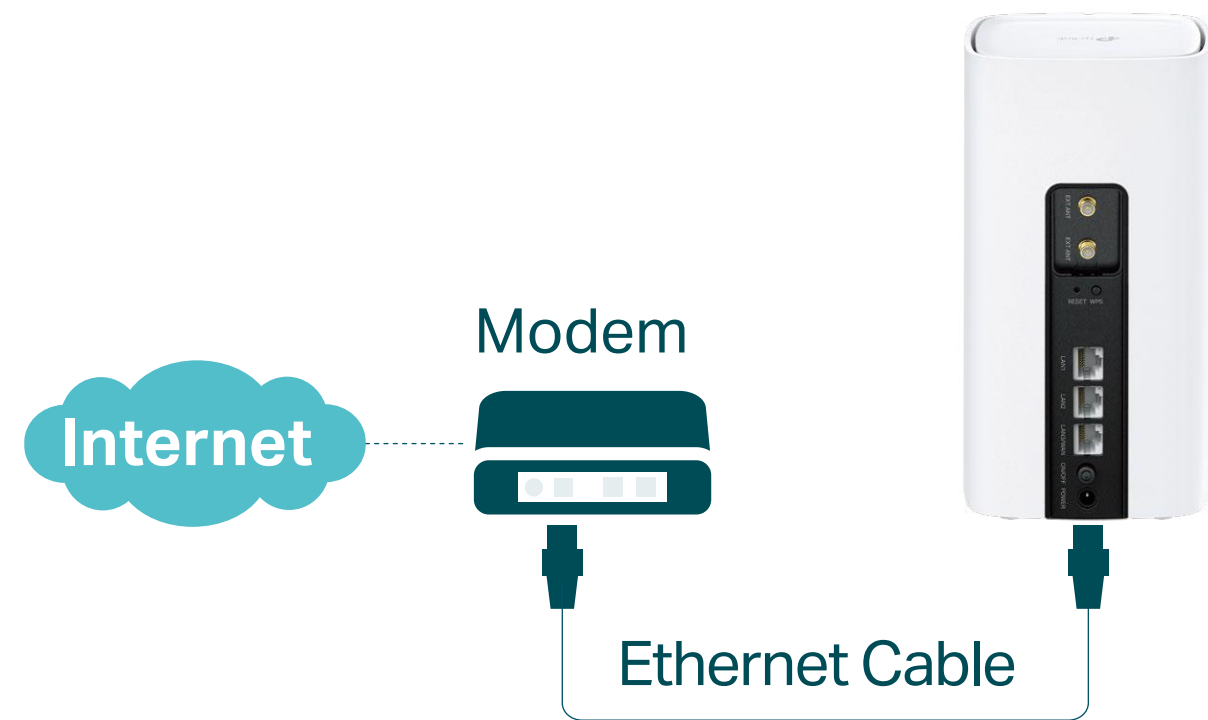
Mesh networking creates smooth, fast, stable roaming. Eliminate Wi-Fi dead zones, expand your network, and fill your entire home with high-speed Wi-Fi.



Highlights

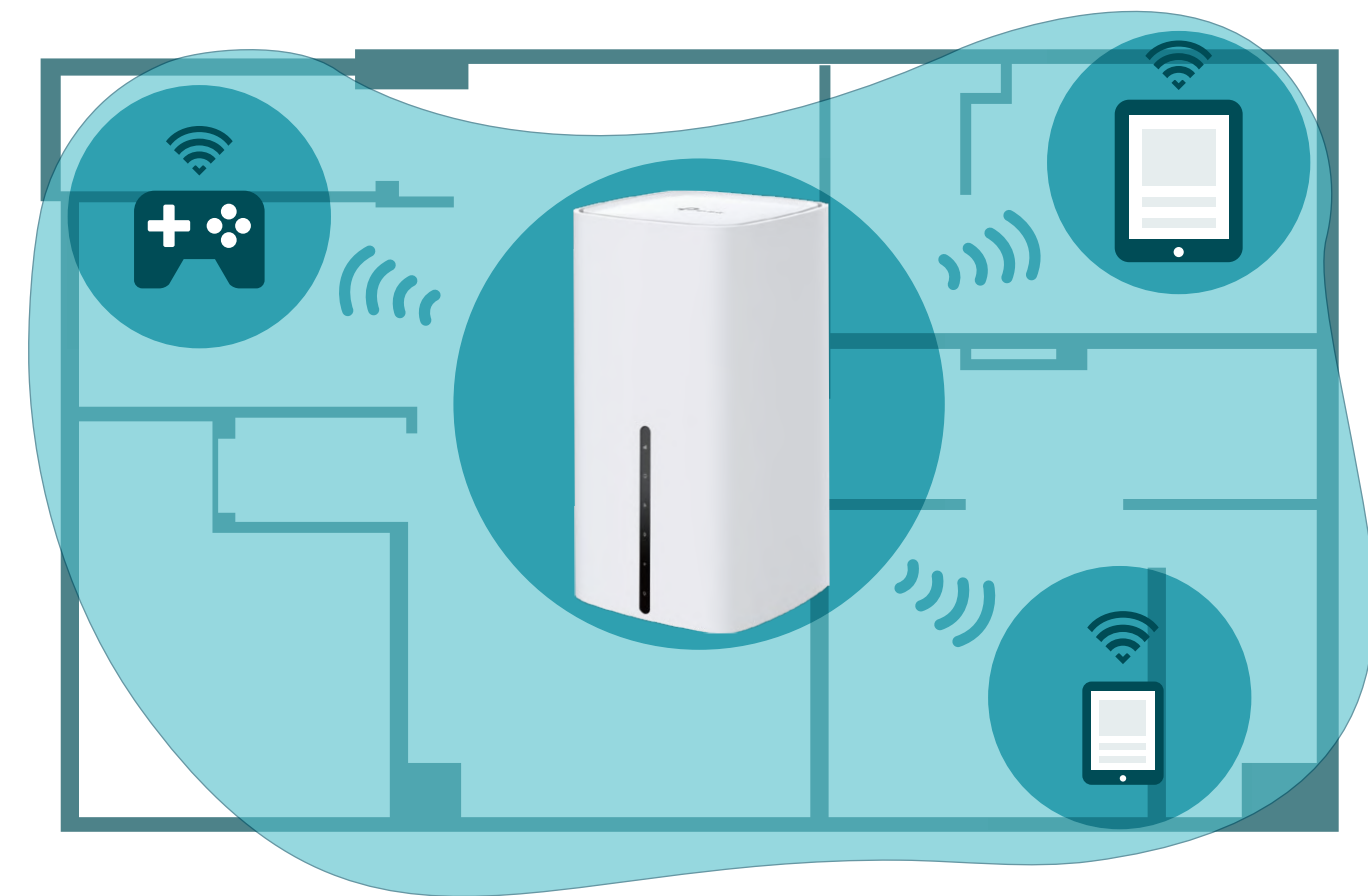
Available WAN Connection

The gigabit WAN/LAN port enables NX200 to work as a traditional wireless router which is compatible with cable, fiber, and DSL modems. And when it's set as a wireless router, its 5G/LTE connection works as a backup to provide a sustained and reliable internet connection for you.

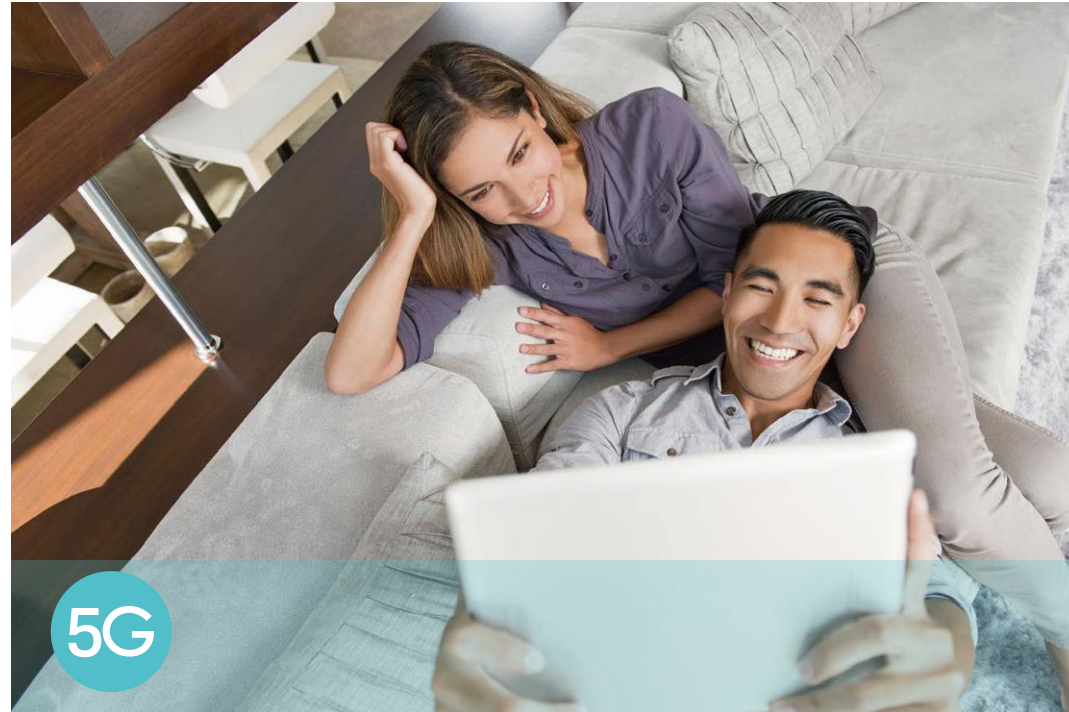


Maximum Network Coverage

Advanced 5G/LTE antennas make efficient and stable connections to every device. Power Amplifier and Low Noise Amplifier boost sending and receiving capabilities, creating a wide-coverage Wi-Fi network for your home.



Features



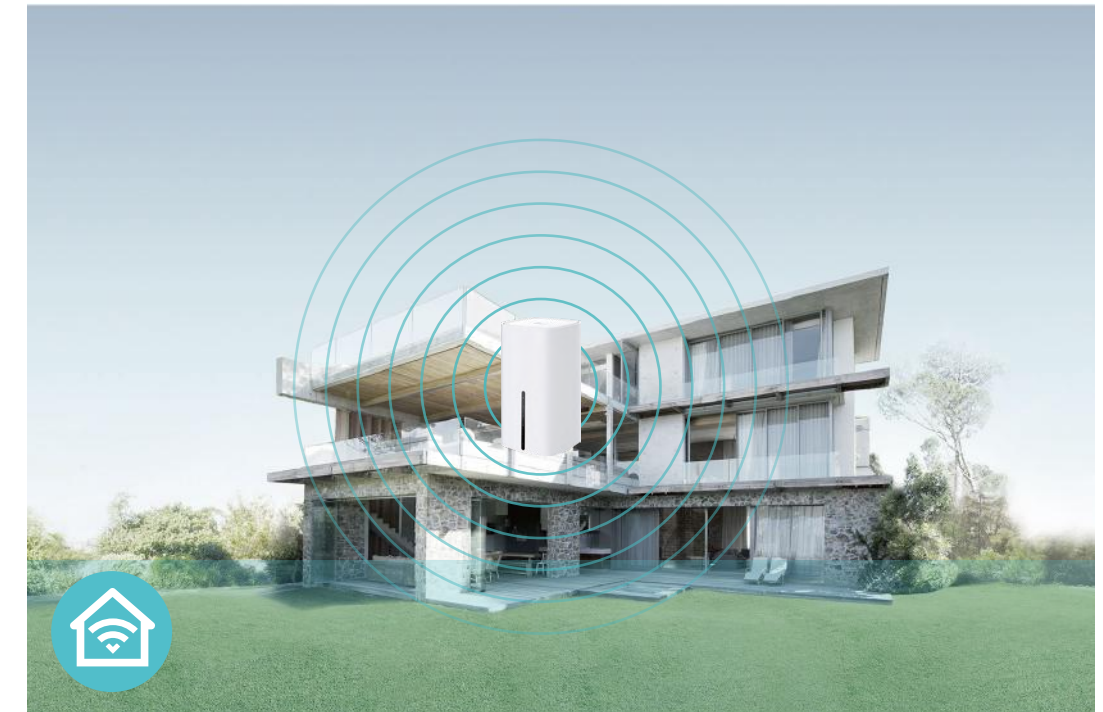
5G Network

- 5G – Ideal for cutting-edge 5G network
- Backward Compatible – Compatible with 4G network



Wi-Fi Speed

- Superior Wireless Speed – Combined wireless speeds up to 574 Mbps over 2.4 GHz, and 1201 Mbps over 5 GHz
- 802.11 ax Standard – Provides a data transfer rate 3 times faster than 802.11ac for each stream



Wi-Fi Range

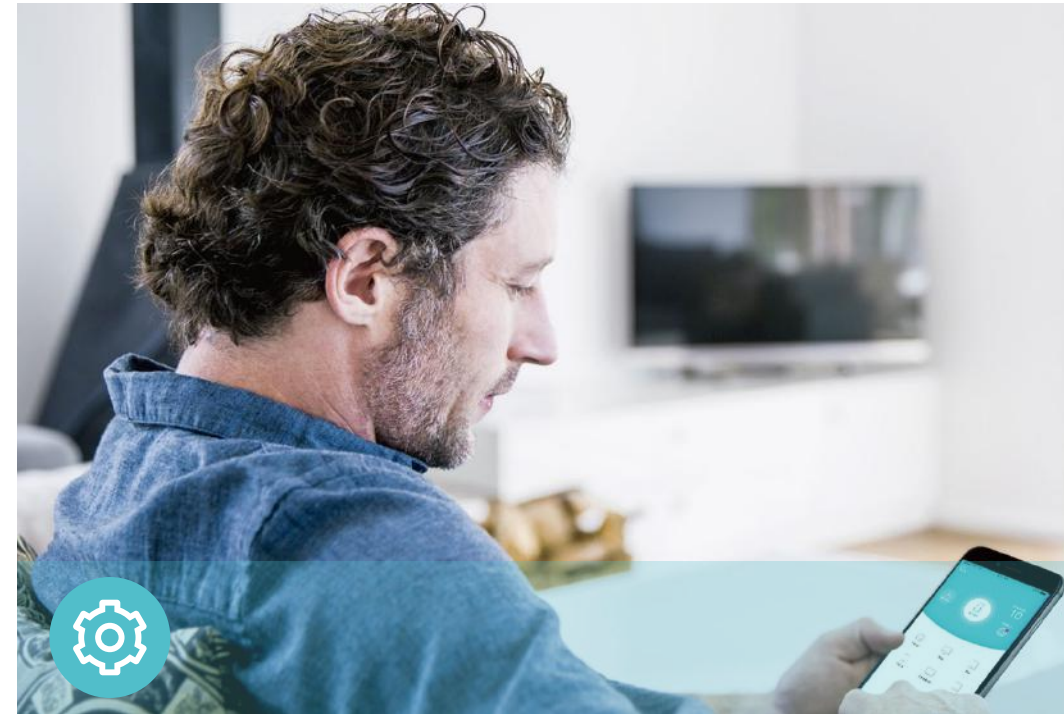
- Great Coverage – Better coverage with integrated Wi-Fi omnidirectional antennas

Features



Reliability

- **Simultaneous Dual Band** – Separate Wi-Fi bands enable more devices to connect to your network without a drop in performance
- **Easy Bandwidth Management** – Advanced QoS makes it easier for you to manage the bandwidth of connected devices
- **Superior Stability** – Powerful processor enables you to connect up to 64 wireless devices with ease



Ease of Use

- **Intuitive Web UI** – Ensures quick and simple installation without hassle
- **Fast Encryption** – One-touch WPA wireless security encryption with the WPS button
- **Wi-Fi On/Off** – Conveniently turn on or off wireless radios as required
- **Hassle-free Management with Tether App** – Network management is made easy with the TP-Link Tether App, available on any Android and iOS device
- **Online Upgrade** – Keeps you informed of the latest firmware and allows online upgrade on the web UI



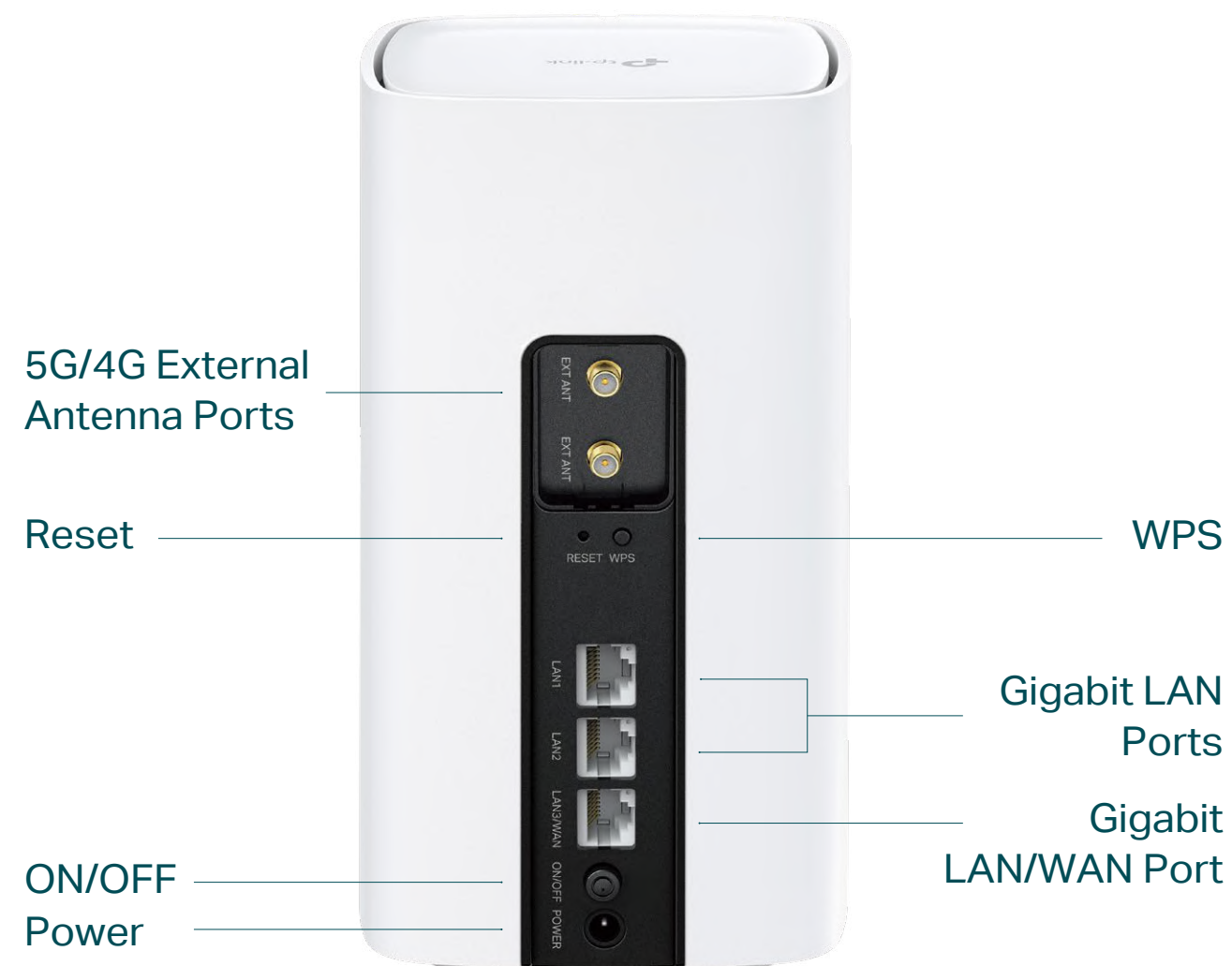
Security

- **Guest Network** – Keeps your main network secure by creating a separate network for friends and visitors
- **Access Control** – Establishes a whitelist or blacklist to allow or restrict certain devices to access the internet
- **Parental Controls** – Restrict internet access time and contents for your children's devices
- **Encryptions for Secure Network** – WPA, WPA2, and WPA3 encryptions provide active protection against security threats

Specifications

Hardware

- Interface: 2×Gigabit LAN Ports, 1×Gigabit LAN/WAN Port, 1×Nano SIM Card Slot, 2×SMA ports for 5G External Antennas, 1×Power port
- Buttons: Wi-Fi/RESET Button, Power Button, WPS Button
- Antennas: 2×Internal Wi-Fi Antennas, 8×Internal NR/LTE Antennas
- External Power Supply: 12V/2A
- Dimensions (W x D x H): 3.9 x 3.9 x 7.5 in (99 x 99x 190 mm)



Wireless

- Network Type
 - 5G: N1/N3/N5/N7/N8/N20/N28/N38/N40/N41/N77/N78
 - 4G: FDD-LTE: B1/B3/B7/B8/B20/B28(2100/1800/2600/900/800/700 MHz)
TDD-LTE: B38/B40/B41/B42/B43(2600/2300/2500/3500/3700 MHz)
 - 3G: DC-HSPA+/HSPA/UMTS: B1/B5/B8(2100/850/900 MHz)
- Wireless Standards: IEEE 802.11a/n/ac/ax 5 GHz, IEEE 802.11b/g/n/ax 2.4 GHz
- Frequency: 2.4 GHz and 5 GHz
- Signal Rate: 574 Mbps at 2.4 GHz, 1201 Mbps at 5 GHz
- EIRP (CE): < 20 dBm (2.4 GHz), < 23 dBm (5 GHz)
- Reception Sensitivity:
 - 5 GHz:
 - 11a 54M: -80 dBm
 - 11ax HE20: -68 dBm 11ax HE40: -65 dBm 11ax HE80: -62 dBm
 - 11ac VHT20: -76 dBm 11ac VHT40: -72 dBm 11ac VHT80: -68 dBm
 - 11n HT20: -79 dBm 11n HT40: -75 dBm
 - 2.4 GHz:
 - 11g 54M: -78 dBm
 - 11ax HE20: -65 dBm 11ax HE40: -62 dBm
 - 11ac VHT20: -73 dBm 11ac VHT40: -68 dBm
 - 11n HT20: -75 dBm 11n HT40: -72 dBm
- Wireless Function: Enable/Disable Wireless Radio, Wireless Schedule, WMM, Wireless Statistics
- Wireless Security: WPA/WPA2, WPA-PSK/WPA2-PSK, WPA3 encryptions

Specifications

Software

- Operating Modes: 3G/4G/5G Router, Wireless Router
- WAN Type: Dynamic IP/Static IP/PPPoE/PPTP(Dual Access)/L2TP(Dual Access)
- DHCP: Server, DHCP Client List, Address Reservation
- Quality of Service: Bandwidth Control
- Port Forwarding: ALG, Virtual Server, Port Triggering, UPnP, DMZ
- Dynamic DNS: TP-Link, DynDns, NO-IP
- VPN Server: PPTP VPN, IPsec VPN, OpenVPN
- Firewall Security: DoS, IPv4 SPI Firewall, IPv6 Firewall, IP and MAC Address Binding, Access Control
- Protocols: IPv4, IPv6
- Management: Access Control, Local Management, Remote Management, reboot schedule
- Guest Network: 2.4 GHz guest network x 1, 5 GHz guest network x 1

Others

- Certification:
CE, RoHS
- Requirements:
Edge, Firefox, Chrome, Safari, or other JavaScript-enabled browser
*You are recommended to use the latest version
Nano SIM Card
- Environment:
Operating Temperature: 0°C~40°C (32°F ~104°F)
Operating Humidity: 10%~90% non-condensing
Storage Humidity: 5%~90% non-condensing
- Package Contents
5G AX1800 Wireless Dual Band Gigabit Router Archer NX200
RJ45 Ethernet Cable
Power Adapter
Quick Installation Guide



For more information, please visit

https://www.tp-link.com/products/details/?model=Archer+NX200_V1

or scan the QR code left

Attention: This device may only be used indoors in all EU member states, EFTA countries and Northern Ireland.

Attention: This device may only be used indoors in Great Britain.

¹Maximum wireless signal rates are the physical rates derived from IEEE Standard 802.11 specifications. Actual wireless data throughput and wireless coverage, and number of connected devices are not guaranteed and will vary as a result of network conditions, client limitations, and environmental factors, including building materials, obstacles, volume and density of traffic, and client location.

²Use of Wi-Fi 6 (802.11ax) and its features including OFDMA, MU-MIMO, 1024-QAM require clients to also support the corresponding features.

³Actual network speed may be limited by the rate of the product's Ethernet WAN or LAN port, the rate supported by the network cable, Internet service provider factors and other environmental conditions.

⁴Use of WPA3 requires clients to also support the corresponding feature.

⁵TP-Link EasyMesh-compatible products can network with other devices that use EasyMesh. Failed connections may be due to firmware conflicts of different vendors. The EasyMesh-Compatible function is still being developed on some models and will be supported in subsequent software updates.

⁶Maximum 5G download and upload speeds depend on external factors such as the local 5G network coverage, data plan, real-time network capacity, client limitations, and environmental factors. Actual supported frequency bands may vary slightly in different regions due to certification.

©2024 TP-Link

www.tp-link.com

TP-Link 5G AX1800 Wireless Dual Band Gigabit Router Archer NX200