

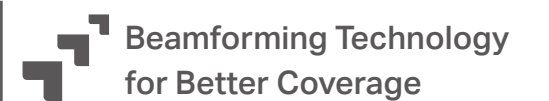
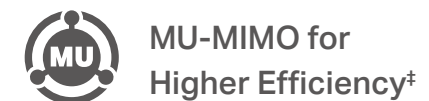
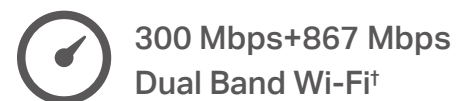


AC1200 Wireless MU-MIMO VDSL/ADSL Modem Router

Fast AC Wi-Fi to Enjoy
Wireless Entertainment



Archer VR400



Highlights

Support TP-Link OneMesh™

Co-work with TP-Link OneMesh products, to provide a more flexible and cost-effective Mesh network with a single Wi-Fi name for seamless whole-home coverage.

*OneMesh Range Extender or Powerline Adapter sold separately.



MU-MIMO for Higher Efficiency

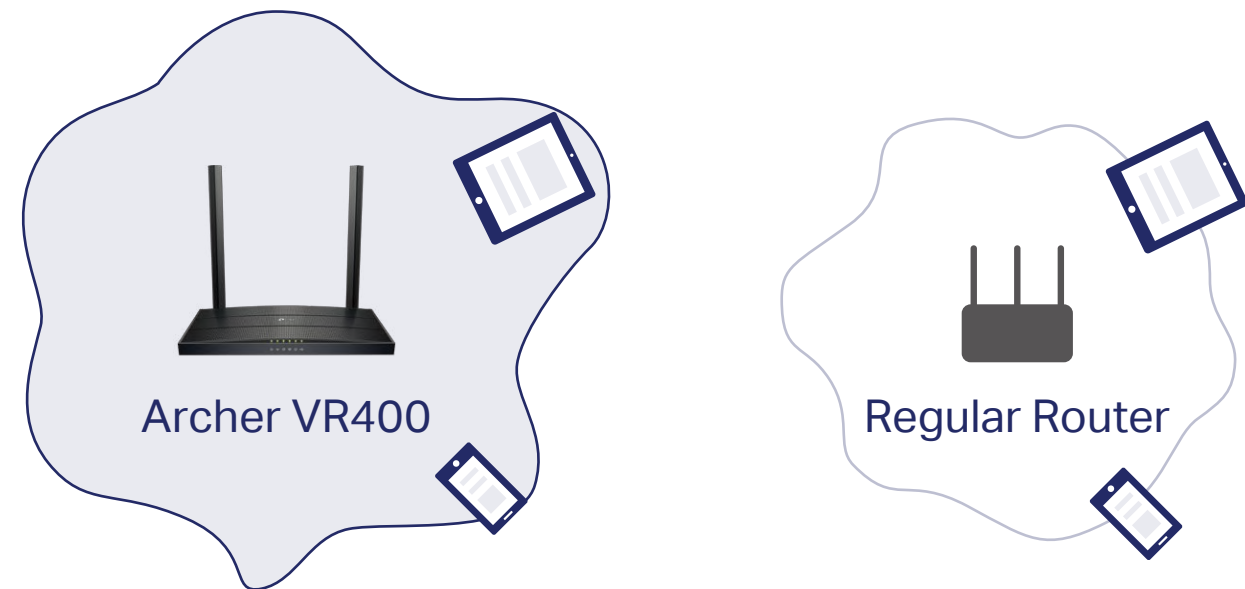
MU-MIMO technology serves multiple devices at once, reducing wait time, increasing Wi-Fi throughput for every device, and making each stream more efficient. †



Highlights

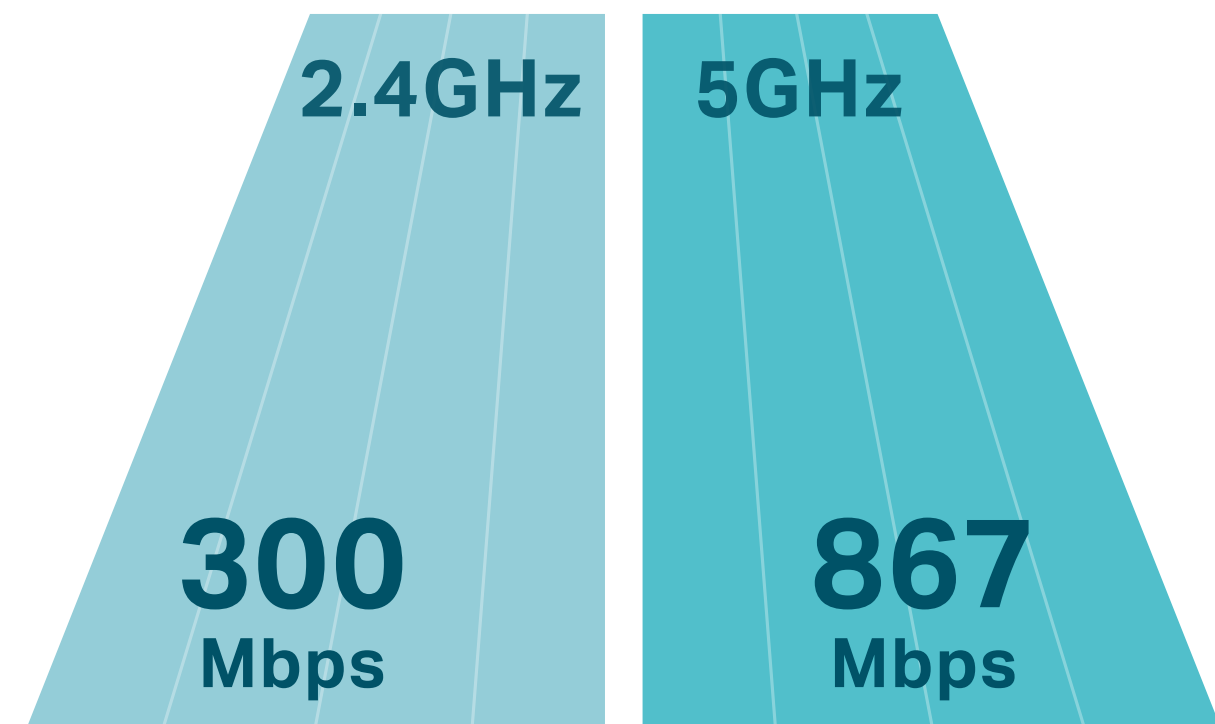
Beamforming for Better Coverage

Beamforming detects the location of your connected devices and concentrates the Archer VR400's Wi-Fi towards them to create stronger overall connections.



Upgrade Your Home Entertainment

The Archer VR400 unlocks the full potential of your internet connection by providing combined dual band Wi-Fi speeds of up to 1.2 Gbps and impressive broadband speeds of up to 100 Mbps, helping all your devices reach peak performance. †

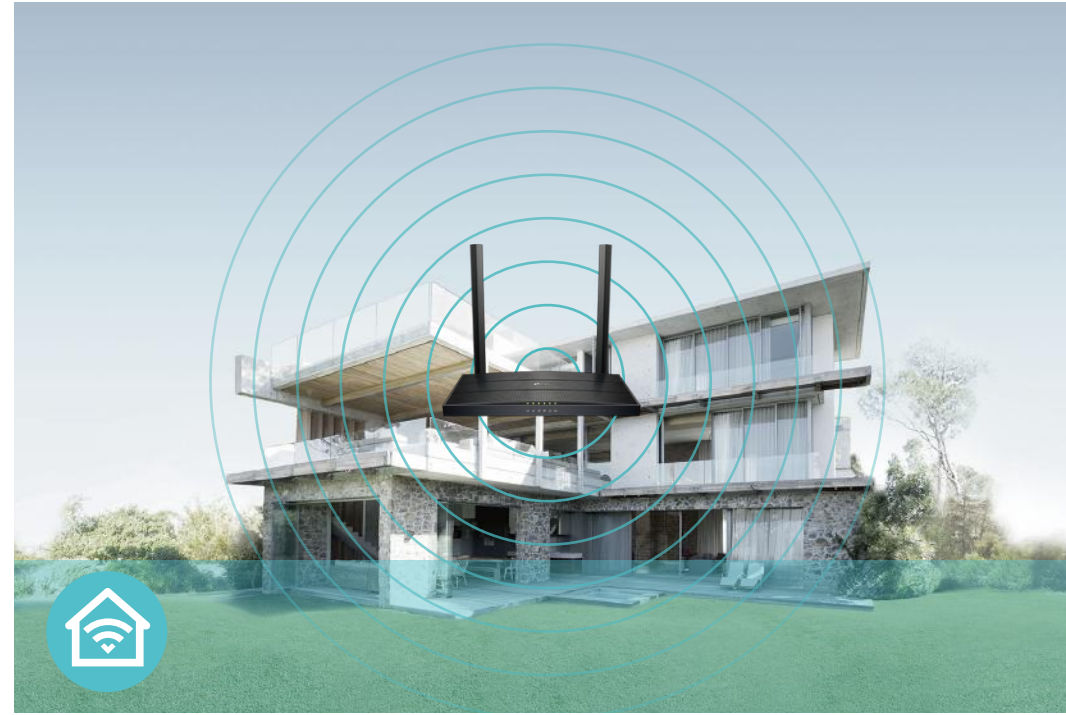


Features



Speed

- **Ultimate Wireless Speed** – Combined wireless speeds of up to 300 Mbps (over 2.4GHz) and 867 Mbps (over 5GHz)
- **802.11 ac** – Provides a data transfer rate 3 times faster than 802.11n for each stream



Wi-Fi Range

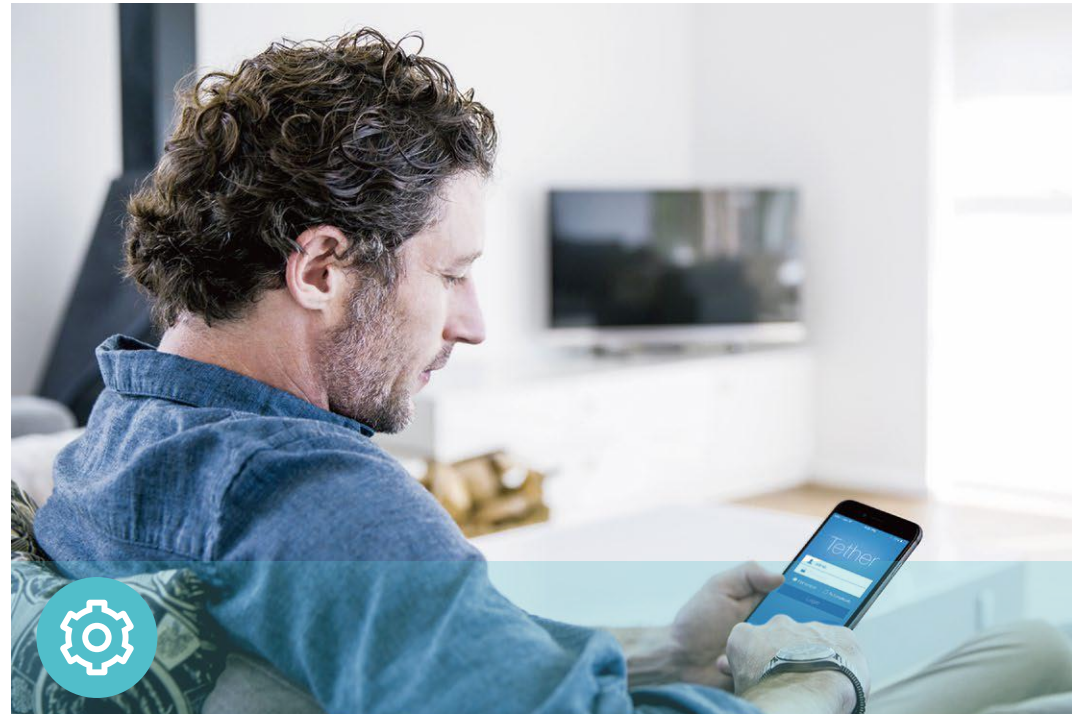
- **Ultimate Range Wi-Fi** – 2 dual band antennas ensure widespread Wi-Fi coverage and a stable connection
- **Wi-Fi with Beamforming** – Beamforming technology locates the connected devices and further improves the Archer VR400's range and the signal strength to each mobile device, delivering a more reliable and efficient wireless connection



Reliability

- **Dual Band** – Separate Wi-Fi bands enable more devices to connect to your network without a drop in performance
- **QoS** – Prioritizes network traffic by device or application
- **IPTV IGMP Proxy/Snooping** – Supports Bridge and Tag VLAN for smooth IPTV application

Features



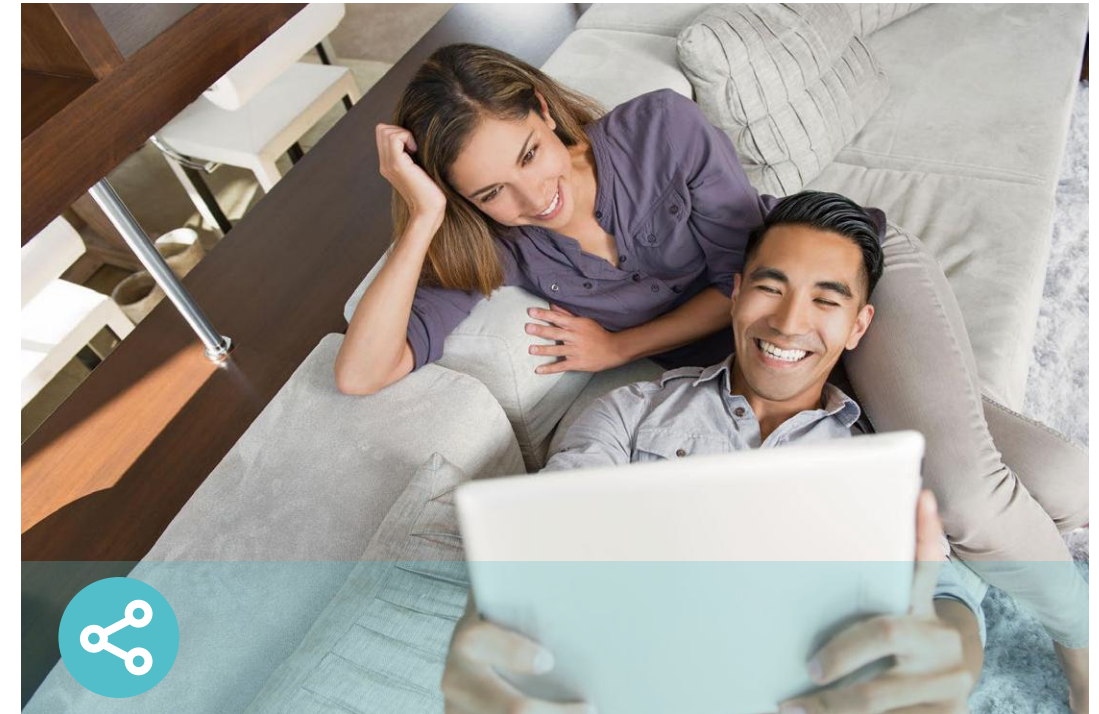
Easy Management

- Intuitive Web UI – Ensures quick and simple installation without hassle
- Remote Management with TP-Link ID – Manage your home network from your smartphone or tablet via a single TP-Link ID, no matter where you find yourself
- Hassle-free Management with Tether App – Network management is made easy with the TP-Link Tether App, available on any Android or iOS device
- Online Upgrade – Keeps you informed of the latest firmware and allows online updating



Security

- Guest Network – Provides separate access for guests while securing the home network
- Access Control – Establish a whitelist or blacklist to allow or block certain devices from accessing the internet
- Parental Controls – Manage responsible internet access for your children
- VPN Server – OpenVPN, PPTP VPN and IPSec VPN are supported, making it easy to set up a secure connection between your private network and the internet
- Encryptions for Secure Network – WPA-PSK/WPA2- PSK encryptions provide active protection against security threats



Ease of Use

- WPS – Makes secure wireless connection quick and easy with the push of a button
- Wi-Fi Schedule – The wireless network can be automatically off within a specified period when you do not need the wireless connection

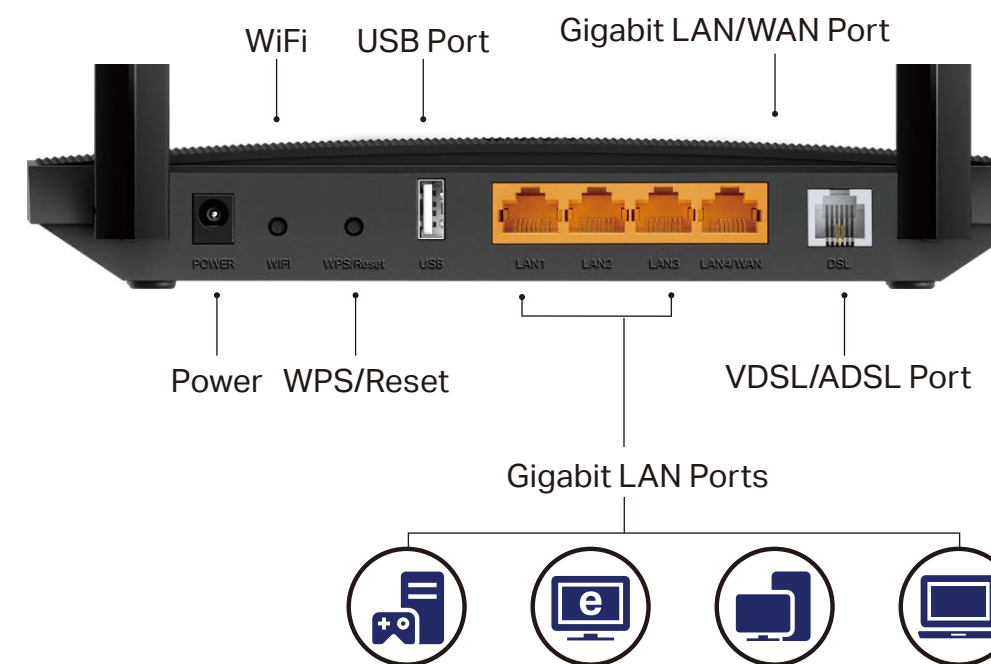
Specifications

Hardware

- Ethernet Ports: 3 10/100/1000Mbps RJ45 LAN Ports, 1 10/100/1000Mbps RJ45 WAN/LAN Port, 1 RJ11 Port
- USB Port: 1 USB 2.0
- Button: WPS Button, Wi-Fi On/Off Button, Reset Button
- External Power Supply: 12V/1A
- Dimensions (W x D x H): 8.5 × 4.9 × 1.2 in (215.6 × 124.6 × 31.6 mm)
- IEEE Standards: IEEE 802.3, IEEE 802.3u, 802.3ab
- VDSL2 Standards: ITU G.993.2, Up to 17a profile (POTS)
ITU-T G.993.5 (G.vector)
ITU-T G.998.4 (G.INP)
- ADSL Standards: Full-rate ANSI T1.413 Issue 2,
ITU-T G.992.1(G.DMT),
ITU-T G.992.2(G.Lite),
ITU-T G.994.1 (G.hs),
- ADSL2 Standards: ITU-T G.992.3 (G.DMT.bis),
- ADSL2+ Standards: ITU-T G.992.5
- Antenna Type: 2 fixed Omini-Directional antennas

Wireless

- Wireless Standards: IEEE 802.11ac/n/a 5GHz, IEEE 802.11b/g/n 2.4GHz
- Frequency: 2.4 GHz and 5 GHz
- Signal Rate: 867Mbps at 5 GHz, 300Mbps at 2.4 GHz
- Transmit Power: <20dBm (2.4 GHz), <23dBm (5 GHz)
- Wireless Function: Enable/Disable Wireless Radio, WMM, Wireless Statistics
- Wireless Security: 64/128-bit WEP, WPA/WPA2, WPA-PSK/WPA2-PSK encryptions
- Wireless Schedule: Support 2.4 GHz and 5 GHz Wireless Schedule



Specifications

Software

- Operation Modes: VDSL/ADSL Modem Router, Wireless Router, 3G/4G Router
- DHCP: Server, Client, DHCP Client List, Address Reservation, DHCP Relay
- Port Forwarding: Virtual Server, Port Triggering, DMZ, ALG, UPnP
- Dynamic DNS: DynDns, NO-IP, TP-Link
- VPN: OpenVPN, PPTP VPN, IPsec VPN
- ATM/PPP Protocols: ATM Forum UNI3.1/4.0, PPP over ATM (RFC 2364), PPP over Ethernet (RFC2516), IPoA (RFC1577/2225), MER/IPvE (RFC 1483 Routed), Bridge (RFC1483 Bridge), PVC – Up to 8 PVCs
- Security: NAT Firewall, SPI Firewall, Access Control, Service Filtering, Denial of Service (DoS), SYN Flooding, Ping of Death, IP and MAC Address Binding
- Advanced Functions: Parental Controls, Network Address Translation(NAT), Port Mapping (Grouping), Static Routing, RIP v1/v2 (optional), DDNS, IGMP V1/V2/V3
- Management: Web Based Configuration (HTTP / HTTPS), Remote management, Command Line Interface, SSL for TR-069, SNMP v1/2c, Firmware Upgrade, Diagnostic Tools, Free Online Firmware Update
- Guest Network: 2.4GHz Guest Network, 5GHz Guest Network
- Protocols: Supports IPv4 and IPv6

Others

- Certification: CE, RCM, RoHS
- System Requirements:
 - Microsoft Windows 98SE, NT, 2000, XP, Vista™ or Windows 7, 8, 8.1, 10, Mac OS, NetWare, UNIX or Linux
 - Internet Explorer 11, Firefox 12.0, Chrome 20.0, Safari 4.0, or other Java-enabled browser
 - Subscription with an internet service provider (for internet access)
- Environment
 - Operating Temperature: 0°C~40°C (32°F ~104°F)
 - Operating Humidity: 10%~90% non-condensing
- Package Contents
 - AC1200 Wireless MU-MIMO VDSL/ADSL Modem Router Archer VR400
 - External Splitter
 - RJ11 DSL Cable
 - RJ45 Ethernet Cable
 - Power Adapter
 - Quick Installation Guide



For more information, please visit

http://www.tp-link.com/en/products/details/cat-15_Archer-VR400.html

or scan the QR code left

Attention: This device may only be used indoors in all EU member states and EFTA countries.

Specifications are subject to change without notice. TP-Link is a registered trademark of TP-Link Technologies Co., Ltd. Other brands and product names are trademarks or registered trademarks of their respective holders. Copyright ©2020 TP-Link Technologies Co., Ltd. All rights reserved.

*Maximum wireless signal rates are the physical rates derived from IEEE Standard 802.11 specifications. Actual wireless data throughput, wireless coverage, and the number of connected devices are not guaranteed and will vary as a result of network conditions, client limitations, and environmental factors, including building materials, obstacles, volume and density of traffic, and client location.

*Use of MU-MIMO requires clients to also support MU-MIMO.

www.tp-link.com

TP-Link AC1200 Wireless MU-MIMO VDSL/ADSL Modem Router Archer VR400