

## PERFORMANCE

### Processor

Intel® Core™ Ultra 5 125U, 12C (2P + 8E + 2LPE) / 14T, Max Turbo up to 4.3GHz, 12MB

### Graphics

Integrated Intel® Graphics

### Chipset

Intel® SoC Platform

### Memory

16GB Soldered LPDDR5x-7467

### Memory Slots

Memory soldered to systemboard, no slots, dual-channel

### Max Memory

16GB soldered memory, not upgradable

### Storage

512GB SSD M.2 2242 PCIe® 4.0x4 NVMe®

### Storage Support<sup>[1]</sup>

One drive, up to 1TB M.2 2242 SSD

### Storage Slot

One M.2 2242 PCIe® 4.0 x4 slot

### Card Reader

microSD Card Reader

### Optical

None

### Audio Chip

High Definition (HD) Audio, Realtek® ALC3306 codec

### Speakers

Stereo speakers, 2W x2, optimized with Dolby Atmos®, Smart Amplifier (AMP)

### Camera

FHD 1080p + IR with Privacy Shutter

### Microphone

2x, Array

### Battery<sup>[2]</sup>

Integrated 71Wh

### Power Adapter

65W USB-C® (3-pin)

## DESIGN

### Display<sup>[3][4]</sup>

14" WUXGA (1920x1200) IPS 300nits Glossy / Anti-fingerprint, 45% NTSC, 60Hz, Dolby Vision®, TÜV Low Blue Light, Glass, Touch

### Touchscreen

OGM, 10-point Multi-touch

### Color Calibration

None

### Keyboard

Backlit, Greek

### Touchpad

Buttonless glass-like Mylar® surface multi-touch touchpad, supports Precision TouchPad (PTP), 75 x 120 mm (2.95 x 4.72 inches)

### Case Color

Storm Grey

### Surface Treatment

Aluminium Stamping (Anodized with Sandblasting)

### Case Material

Aluminium (Top), Aluminium (Bottom)

### Pen

Lenovo® Digital Pen

### Dimensions (WxDxH)<sup>[5]</sup>

317.72 x 222.13 x 16.64 mm (12.51 x 8.75 x 0.66 inches)

### Weight<sup>[6]</sup>

Starting at 1.61 kg (3.55 lbs)

## SOFTWARE

### Operating System

Windows® 11 Home, Greek / English

### Bundled Software

Office Trial

## CONNECTIVITY

### Ethernet

No Onboard Ethernet

### WLAN + Bluetooth<sup>[7]</sup>

Wi-Fi® 6E, 11ax 2x2 + BT5.3

### Standard Ports

- 1x USB-A (USB 5Gbps / USB 3.2 Gen 1), Always On
- 2x USB-C® (Thunderbolt™ 4 / USB4® 40Gbps), with USB PD 3.1 and DisplayPort™ 2.1
- 1x HDMI® 2.1, up to 4K/60Hz
- 1x Headphone / microphone combo jack (3.5mm)
- 1x microSD card reader

## SECURITY & PRIVACY

### Security Chip

Firmware TPM 2.0

### Fingerprint Reader

Touch Style, on Palm Rest

### Other Security

- IR camera for Windows® Hello (facial recognition)
- Camera privacy shutter

## SERVICE

### Base Warranty

2-year, Courier or Carry-in

### Included Upgrade

CO2 Offset 0.5 ton (2nd Generation Carbon Offset Projects), 3Y Premium Care with Onsite upgrade from 2Y Depot/CCI (CPN)

## ACCESSORIES

### Bundled Accessories<sup>[8]</sup>

None

## CERTIFICATIONS

### Green Certifications<sup>[9]</sup>

- ENERGY STAR® 8.0
- EPEAT™ Gold Registered
- ErP Lot 6
- ErP Lot 26
- RoHS compliant

### Other Certifications

Models with WUXGA IPS panel:  
TÜV Rheinland® Low Blue Light (Software Solution)

### Mil-Spec Test

MIL-STD-810H military test passed (21 test items)

## MODEL

**TopSeller** : No **Announce Date** : 2024-02-07

**EAN / UPC / JAN** : 197530007163 **End of Support** : 2030-03-07

### Note:

<sup>[1]</sup> The storage capacity supported is based on the test results with current Lenovo storage offerings.

<sup>[2]</sup> Rapid Charge Express is only effective in hibernates or fully shutting down the computer.

<sup>[3]</sup> 2.8K & WUXGA OLED panel's viewing angle over 85°

<sup>[4]</sup> IPS (in-plane switching) technology may refer to IPS, PLS, ADS, AHVA, AAS.

<sup>[5]</sup> The system dimensions may vary depending on configurations.

<sup>[6]</sup> The system weight is approximate and based on results in Lenovo lab, which varies depending on the source of component, variance of the distribution of each component, and manufacturing process. It may not be the exact weight for each specific model.

<sup>[7]</sup> Wi-Fi 6E full features might be limited by country-level.....

• Lenovo reserves the right to change specifications without notice.

To see more note information, please link to <https://psref.lenovo.com/Detail/2398?M=83DJ001JGM>

## Premium Care - Advanced Support from Real People. Real Fast.



### REAL PERSON

Choose how you want to reach us - through the phone, chat or email - our expert technicians will take care of you.



### REAL FAST

Highly trained technicians will provide you real-time solutions, whatever the issue, on your first contact. If needed, our team will schedule an onsite visit for the next business day.



### HASSLE FREE

'Getting started' and 'how-to' assistance for hardware and software. Easy solutions that are simple to reach - that's how Premium Care delivers you the ideal support experience.



### PC HEALTH CHECK

Free annual PC Health Check that allows our experts to spot issues before you do so they can resolve them quickly and help you avoid PC problems.

## Accidental Damage Protection - Protection of your PC from the unexpected.

Experience shows that a significant portion of devices may be damaged (and not covered under warranty) in the first three years. Lenovo's Accidental Damage Protection service covers accidents beyond the system warranty such as drops, spills, bumps and even electrical surges. Make sure your new device has maximum protection, avoid unplanned costs and get peace of mind.

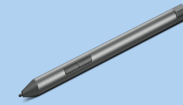
## Base Warranty – Included with the systems you purchase, default 1- or 3-year coverage window.

## Warranty Extensions & Upgrades – Service and protection that's right for your circumstances.

- Pick Up & Return Courier
- Onsite Support
- Technician Installed Customer
- Replaceable Unit Service
- International Warranty Upgrade

Lenovo may not offer the products, services or features discussed in this document in all regions. Lenovo may withdraw an offering at any time. Consult your local representative for information on offerings available in your area. Lenovo reserves the right to change specifications or other product information without notice. Lenovo is not responsible for photographic or typographical errors. Lenovo provides this publication "as is" without warranty of any kind, either express or implied, including the implied warranties of merchantability or fitness for a particular purpose.

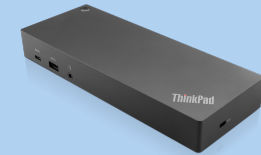
## Recommended Accessories



### Lenovo Digital Pen 2

4X81H95633

The Lenovo Digital Pen 2 improves on the design and functionality of its remarkably popular predecessor. Adding a plastic front cap for enhanced comfort, an elastomer pen tip for precision, and an extended battery off...



### ThinkPad Hybrid USB-C with USB-A Dock (American Standard Plug Type B)

40AF0135US

- The ThinkPad Hybrid USB-C with USB-A dock is a productivity solution for any USB-C or USB-A laptop, including non-Lenovo laptops from Dell, HP, and Apple, providing power, display, and port expansion in any m...

For a full list of accessories and services, please visit:  
<https://smartfind.Lenovo.com>

Lenovo

PSREF  
Product Specifications  
Reference