

# Huawei eKitEngine S110 Series Switches

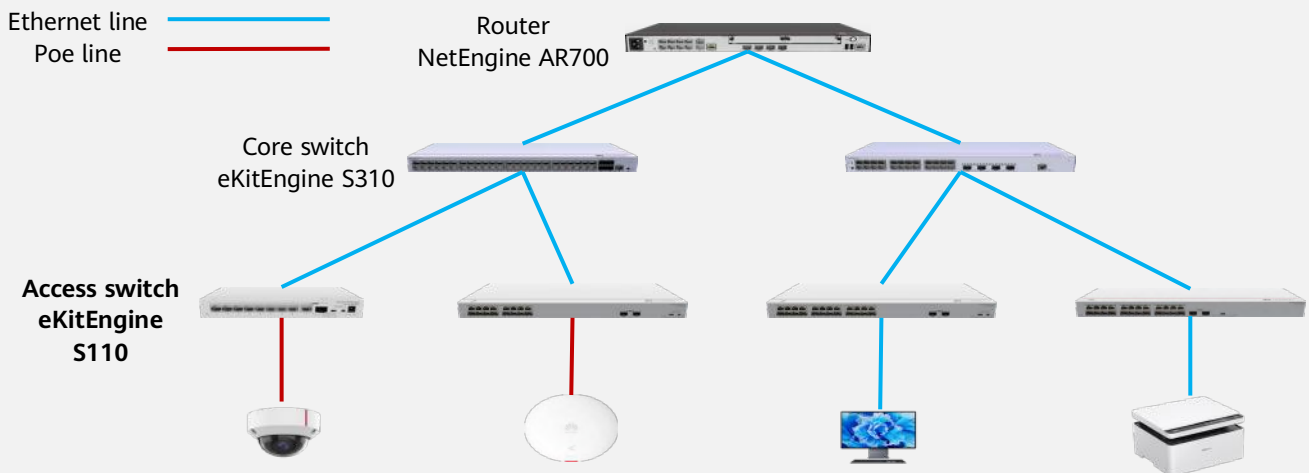


### Four working modes

- standard mode
- port isolation
- port bonding
- flow control disabling

### plug and play

- configuration-free
- management-free



Huawei eKitEngine S110 series switches (S110 for short) are unmanaged switches designed for the distribution market outside China. The whole series adopts an all-new crystal-like appearance design with great visual impacts, winning itself the German Red Dot Design Award 2022. The newly launched colorways of Silk White and Silver Frost are becoming increasingly popular. In addition, the iconic Huawei logo on eKitEngine S110 series switches gives them a more refreshing look. In terms of aesthetics, a diamond cut design is employed to make the switches more elegant through an integrated and completely seamless surface with sleek corners. Therefore, eKitEngine S110 series switches can be widely used in access scenarios such as SOHO enterprises, and commercial stores.

# Product Specifications

Specifications	eKitEngine S110-8T2ST	eKitEngine S110-8P2ST
Switching capacity	20 Gbps	20 Gbps
Packet forwarding rate	14.88 Mpps	14.88 Mpps
Downlink port	8 x 10/100/1000BASE-T ports	8 x 10/100/1000BASE-T PoE+ ports
Uplink port	1 x GE electrical port, 1 x GE SFP port	1 x GE electrical port, 1 x GE SFP port
MAC address entry	4K MAC address entries	4K MAC address entries
Dimensions (H x W x D)	35 mm x 210 mm x 130 mm	35 mm x 210 mm x 130 mm
Weight	0.40 kg	0.91 kg
Input voltage	12 V	54 V
Maximum power consumption	8 W	<ul style="list-style-type: none"> <li>Without PoE: 10 W</li> <li>With PoE: 158 W (PoE: 124 W)</li> </ul>
Long-term operating temperature	0°C to 40°C (0 m to 1800 m)	0°C to 40°C (0 m to 1800 m)
Storage temperature	-40°C to +70°C	-40°C to +70°C
Operating humidity	5% to 95%	5% to 95%
Service port surge protection	±4 kV	±4 kV
Working mode	Three working modes: standard mode, port isolation and flow control disabling	
Heat dissipation mode	Fanless, natural heat dissipation	Fanless, natural heat dissipation

Specifications	eKitEngine S110-16T2S	eKitEngine S110-16LP2SR	eKitEngine S110-24T2SR	eKitEngine S110-24LP2SR
Switching capacity	36 Gbps	36 Gbps	52 Gbps	52 Gbps
Packet forwarding rate	26.78 Mpps	26.78 Mpps	38.69 Mpps	38.69 Mpps
Downlink port	16 x 10/100/1000BASE-T ports	16 x 10/100/1000BASE-T ports	24 x 10/100/1000BASE-T ports	24 x 10/100/1000BASE-T PoE+ ports
Uplink port	2 x GE SFP ports	2 x GE SFP ports	2 x GE SFP ports	2 x GE SFP ports
MAC address entry	8K MAC address entries	8K MAC address entries	8K MAC address entries	8K MAC address entries
Dimensions (H x W x D)	43.6 mm x 320 mm x 210 mm	43.6 mm x 442 mm x 260 mm	43.6 mm x 442 mm x 160 mm	43.6 mm x 442 mm x 260 mm

Weight	1.81 kg	3.2 kg	2.0 kg	3.4 kg
Input voltage	100 V AC to 240 V AC, 50 Hz to 60 Hz	110 V AC to 240 V AC, 50 Hz to 60 Hz	100 V AC to 240 V AC, 50 Hz to 60 Hz	110 V AC to 240 V AC, 50 Hz to 60 Hz
Maximum power consumption	10 W	<ul style="list-style-type: none"> <li>Without PoE: 22 W</li> <li>With PoE: 146 W (PoE: 124 W)</li> </ul>	17 W	<ul style="list-style-type: none"> <li>Without PoE: 27 W</li> <li>With PoE: 151 W (PoE: 124 W)</li> </ul>
Long-term operating temperature	0°C to 40°C (0 m to 1800 m)	0°C to 45°C (0 m to 1800 m)	0°C to 40°C (0 m to 1800 m)	0°C to 45°C (0 m to 1800 m)
	Note: When the altitude ranges between 1800 m and 5000 m, the highest operating temperature reduces by 1°C each time the altitude increases by 220 m.			
Storage temperature	-40°C to +70°C	-40°C to +70°C	-40°C to +70°C	-40°C to +70°C
Operating humidity	5% to 95%	5% to 95%	5% to 95%	5% to 95%
Working mode	Four working modes: standard mode, port isolation, port bonding, and flow control disabling			
Heat dissipation mode	Fanless, natural heat dissipation	Fanless, natural heat dissipation	Fanless, natural heat dissipation	Fanless, natural heat dissipation